

2017



State of the Open Space Report



Photo credit: Liam Doran

Open Space Program at a Glance

1996

Breckenridge voters approved a 0.5% sales tax to fund open space acquisitions & management

\$20,259,575

TOB Funds used to date for open space acquisitions

\$11,778,580

Funds contributed by Summit County Government towards joint purchases of open space

\$2,418,660

Total Open Space budget for 2016

\$92,331

Estimated value of volunteer time donated in 2016 via the Friends of Breckenridge Trails program

54.7

Miles of multi-use non-motorized trails

1,683

Number of acres jointly purchased with Summit County through the B&B Mines acquisition, the program's largest acquisition

6

Number of seasonal Town Trail Crew staff charged with maintaining the extensive trail network providing public access to our open space properties

147

Total number of all open space acquisitions

4,700

Total number of acres protected as open space

Mission Statement

The purpose of the Breckenridge Open Space program is to preserve lands and trails through acquisition and stewardship efforts, with the goal of maintaining the unique mountain character of the Upper Blue Basin and our community's quality of life.

| Year | Acres |
|--------------|--------------|
| Pre-1997 | 119 |
| 1997 | 164 |
| 1998 | 150 |
| 1999 | 173 |
| 2000 | 261 |
| 2001 | 640 |
| 2002 | 128 |
| 2003 | 105 |
| 2004 | 214 |
| 2005 | 1858 |
| 2006 | 7 |
| 2007 | 76 |
| 2008 | 70 |
| 2009 | 73 |
| 2010 | 74 |
| 2011 | 124 |
| 2012 | 91 |
| 2013 | 74 |
| 2014 | 153 |
| 2015 | 66 |
| 2016 | 82 |
| Total | 4,700 |

Open Space Acquisitions

In 1996, a voter initiative passed, which dedicated a 0.5% Town sales tax to open space acquisition and management. In the 19 years since its adoption, the Town's Open Space program has acquired a total of **4,700 acres** of property through purchases, land trades, dedications, and joint purchases with Summit County Government.

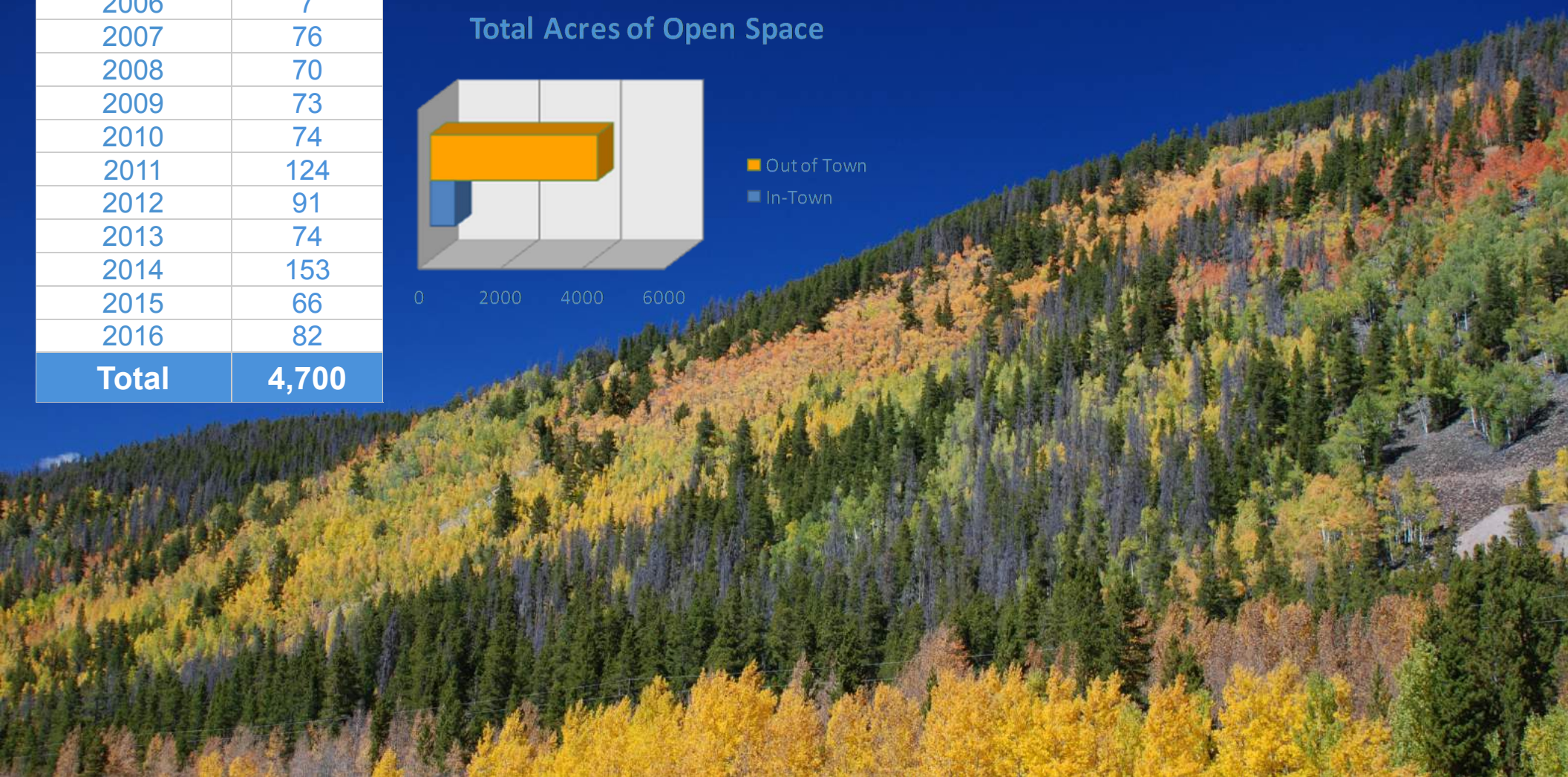
Of the 4,700 acres, 3,973 acres have been purchased and 727 acres have been acquired through land trades and dedications.

Total Acres of Open Space



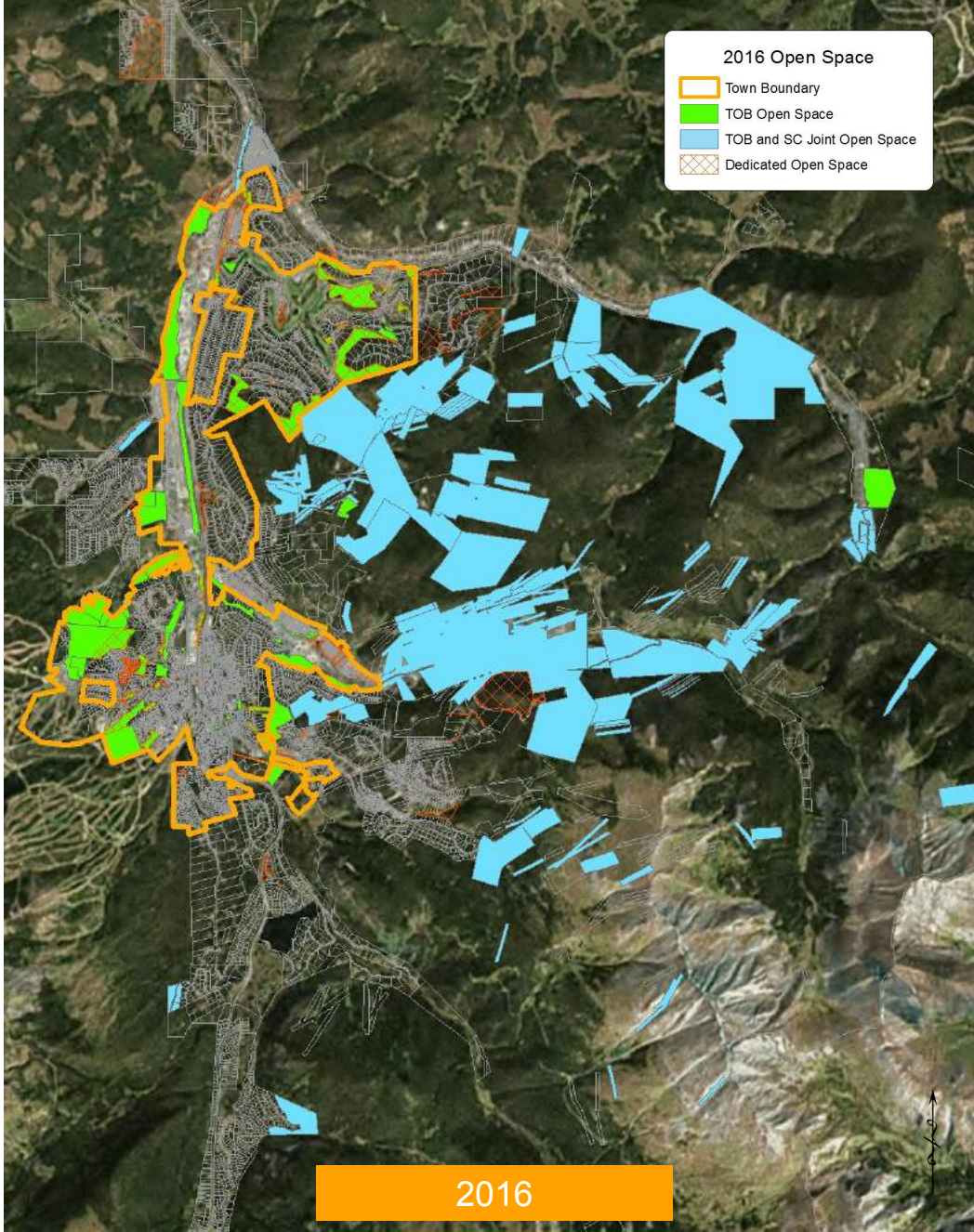
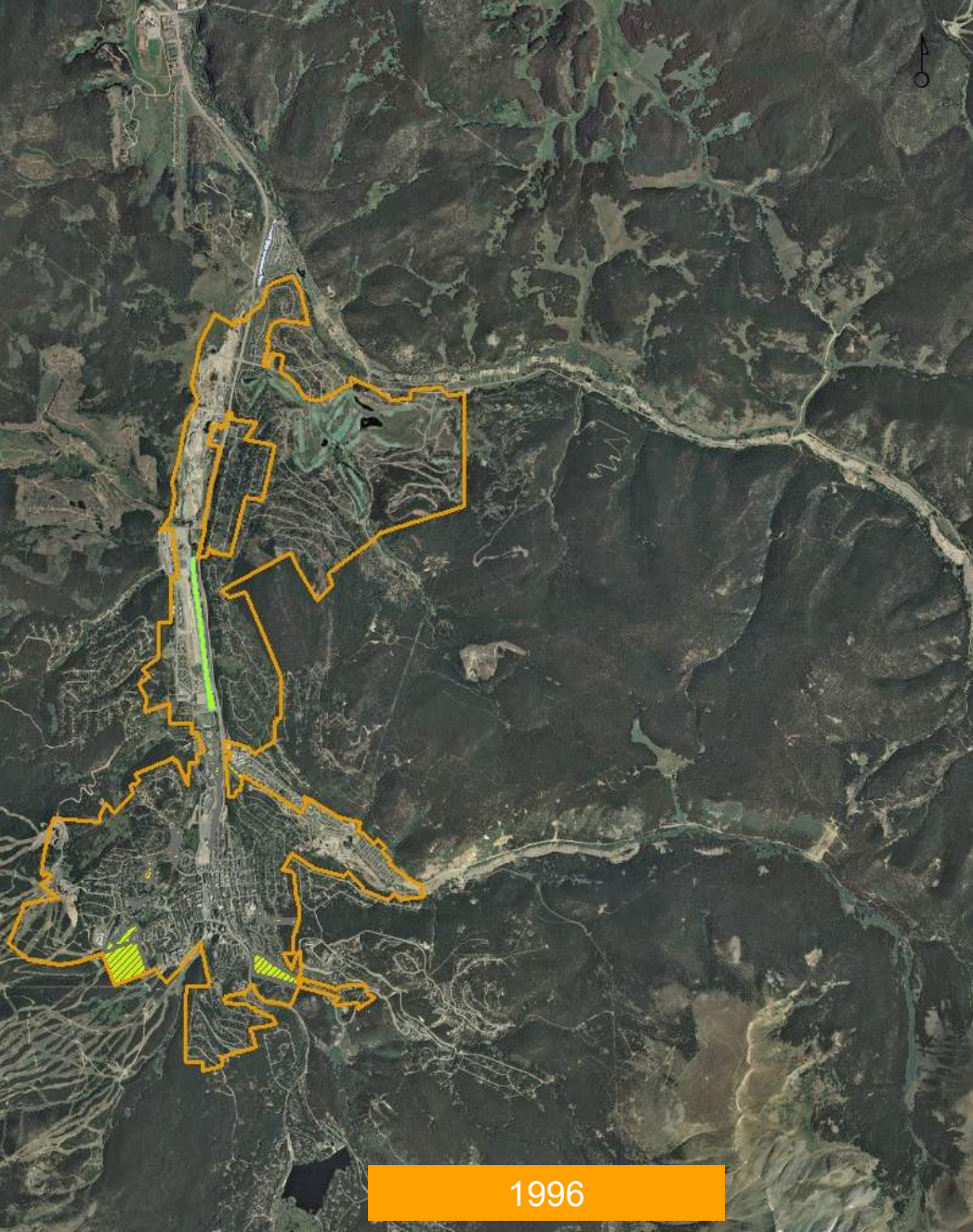
Did You Know?

The majority of open space acquisitions have been located outside of Town limits (4,090 acres out of Town versus 610 acres in-Town). The development philosophy in the Joint Upper Blue Master Plan focuses development in the core of Town and minimizes development in the surrounding backcountry.



Open Space Comparison: 1996 and 2016

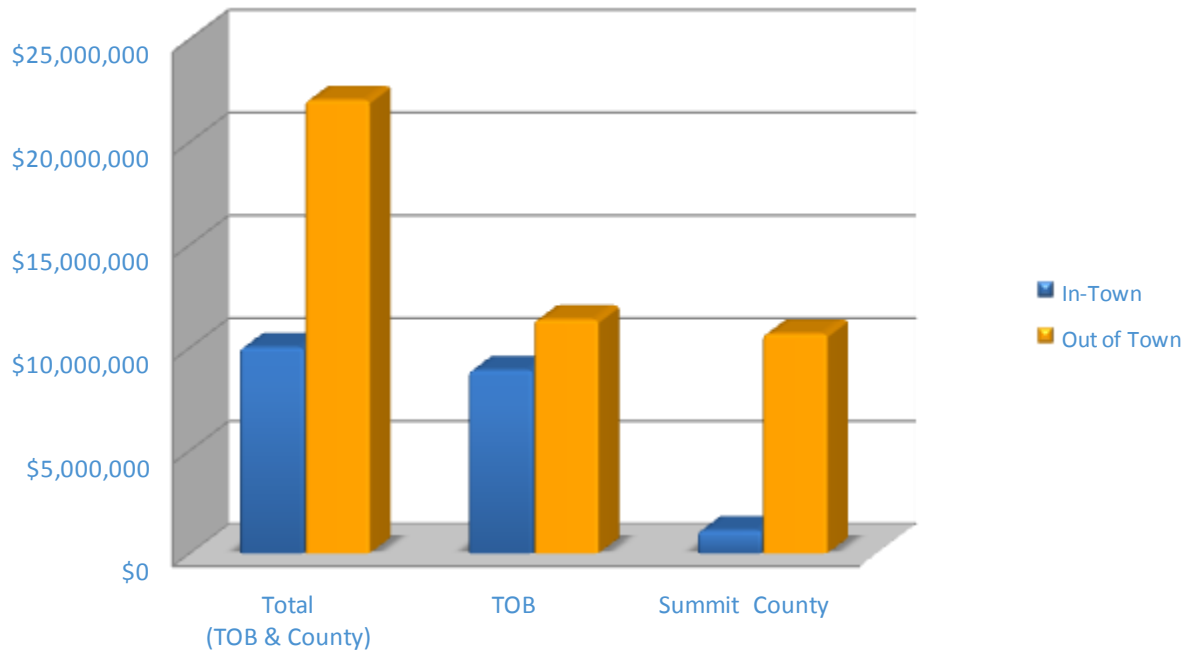
Prior to the establishment of the Open Space program in 1997, the Town owned **119 acres** of open space. Today, the program manages **4,700 acres** of open space, **3,969 acres** of which were jointly acquired with Summit Count Government. A number of the joint purchases lie just outside the Town boundary.



Acquisition Expenditures

The Town has spent \$20,259,575 on open space acquisitions since the start of the Open Space program. Of this amount, \$8,898,656 (44%) has been used for in-Town acquisitions and \$11,360,919 (56%) has been used for out of Town acquisitions.

Total Open Space Expenditures



F&D Placer (In-Town)

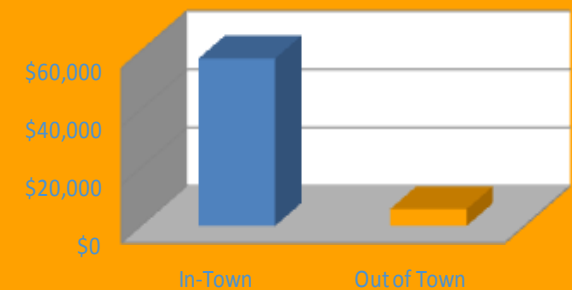


Laurim Property (Out of Town)

Did You Know?

On a price-per-acre basis, in-Town acquisitions are substantially more expensive (\$59,079 per acre) than out of Town acquisitions (\$5,791 per acre). Of the 610 in-Town acres acquired, only 169 have been purchased.

Acquisition Price Per Acre



| | Total (TOB & County) | TOB | Summit County * |
|--------------|----------------------|---------------------|---------------------|
| In-Town | \$10,008,656 | \$8,898,656 | \$1,110,000 |
| Out of Town | \$22,029,499 | \$11,360,919 | \$10,668,580 |
| Total | \$32,038,155 | \$20,259,575 | \$11,778,580 |

*This is the total amount Summit County has spent in the Upper Blue Basin. In addition to the Upper Blue Basin, Summit County purchases open space in its other three basins.

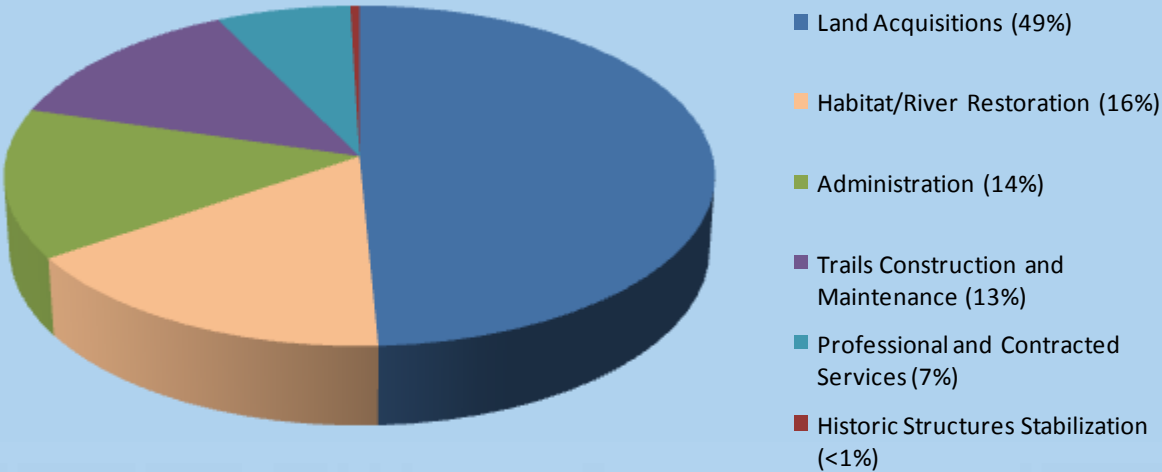
2016 Open Space Budget

The total Open Space program budget for 2016 was \$2,418,660. Land Acquisitions comprise 49% of the projected budget. The program preserves lands that enhance Breckenridge's unique mountain character and maintain our community's quality of life, now and in the future.

Did You Know?
In 2016, the Open Space program's budget for Trails Construction and Maintenance was \$317,500, or 13% of the total budget.

| | |
|------------------------------------|--------------------|
| Land Acquisitions | \$1,191,096 |
| Habitat & River Restoration | \$390,000 |
| Administration | \$343,627 |
| Trails Construction & Maintenance | \$317,500 |
| Professional & Contracted Services | \$165,187 |
| Historic Structures Stabilization | \$11,250 |
| Total Budget | \$2,418,660 |

2016 Open Space Budget



Habitat and River Restoration

The Open Space program was involved in multiple river and habitat restoration projects in 2016.

- The Swan River Restoration is a multi-phase project involving Summit County Open Space and other partners to restore two miles of the Swan River. In 2016, the reach between Rock Island Road and Muggins Gulch was restored. Please visit www.restoretheswanriver.com for more information.
- Cucumber Gulch Preserve: The Town trail crew worked with EcoMetrics and Claffey Ecological to repair breaches in the top spreader ponds below Peak 8.
- Blue River Restoration Project: The Town, with the help of Open Space funds, reconstructed 2,200 linear feet of the Blue River north of Coyne Valley Road. Native riparian landscaping and trails will be installed in 2017.



Historical Structure Stabilization

Through property acquisitions and management, the Open Space program protects public lands with historic sites. In 2016, the Open Space program, together with Summit County Open Space, partnered with Breckenridge Heritage Alliance to stabilize two unique historical structures in the Golden Horseshoe.

- Jesse Mine & Stamp Mill: Multi-year project to help stabilize and correct the severe lean of the structure using winches and cables.
- Wellington Ore Bin Roof: To help prevent deterioration due the elements, a new roof was installed resembling the historic roof in form and material.



Jesse Stamp Mill Before



Wellington Ore Bin with Scaffolding



Jesse Stamp Mill After

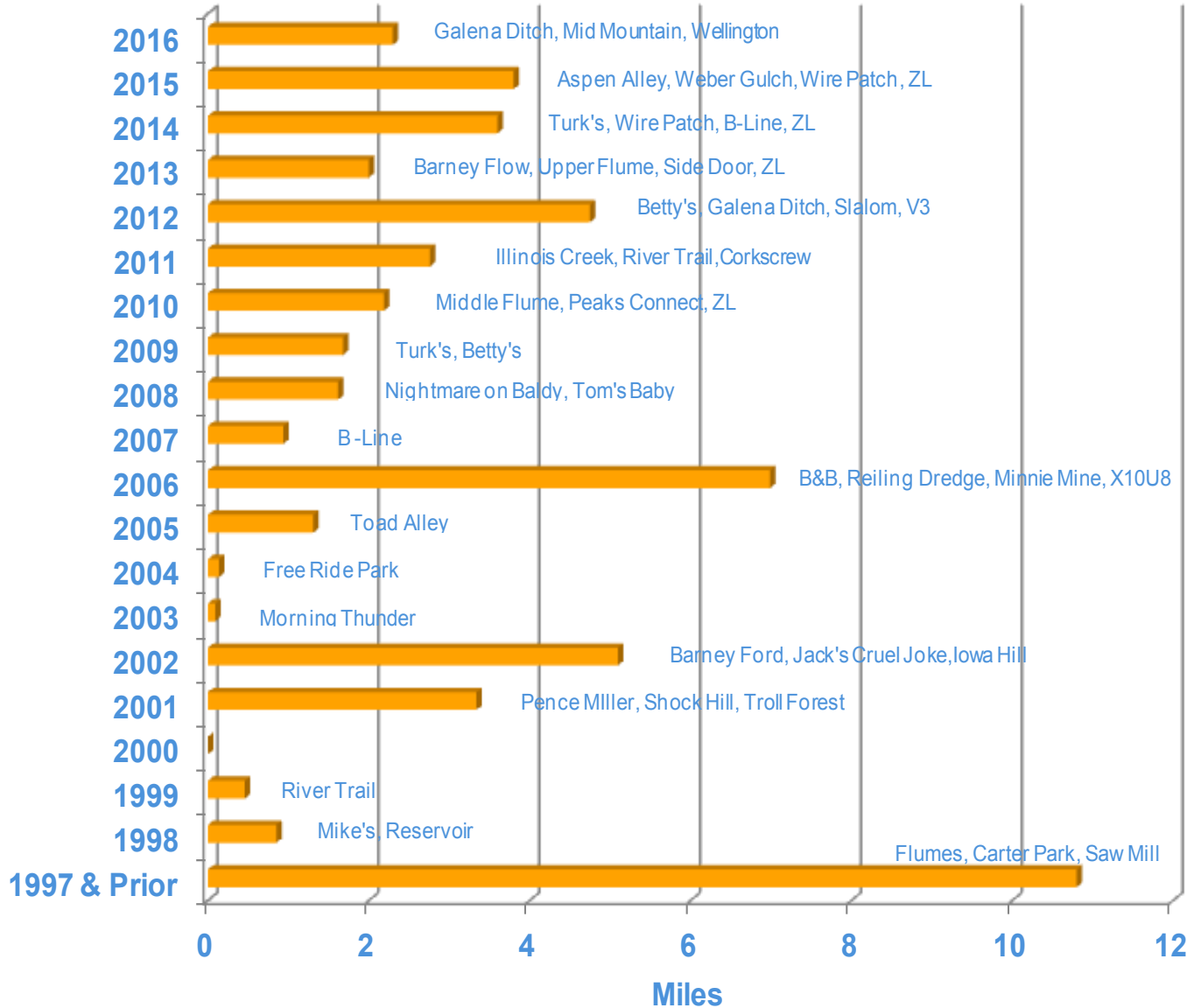


Wellington Ore Bin Completed

Trails

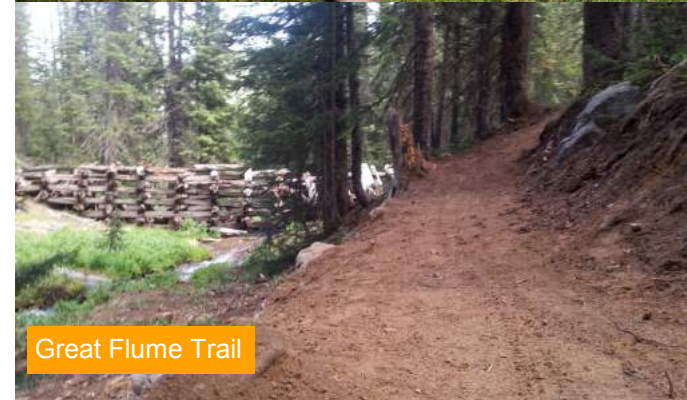
Prior to the establishment of the Open Space program in 1997, the Town managed **10.8 miles** of trails. Today the program manages **54.7 miles** of multi-use trails.

Newly Created Miles of Trails



Rodeo Trail

Photo credit: Liam Doran



Great Flume Trail



Annual Trails Open House

Did You Know?

In addition to the Town-maintained network of trails, over 100 miles of designated trails can be accessed on nearby National Forest lands. Taken together, this trail network is one of the largest and most diverse in the country.

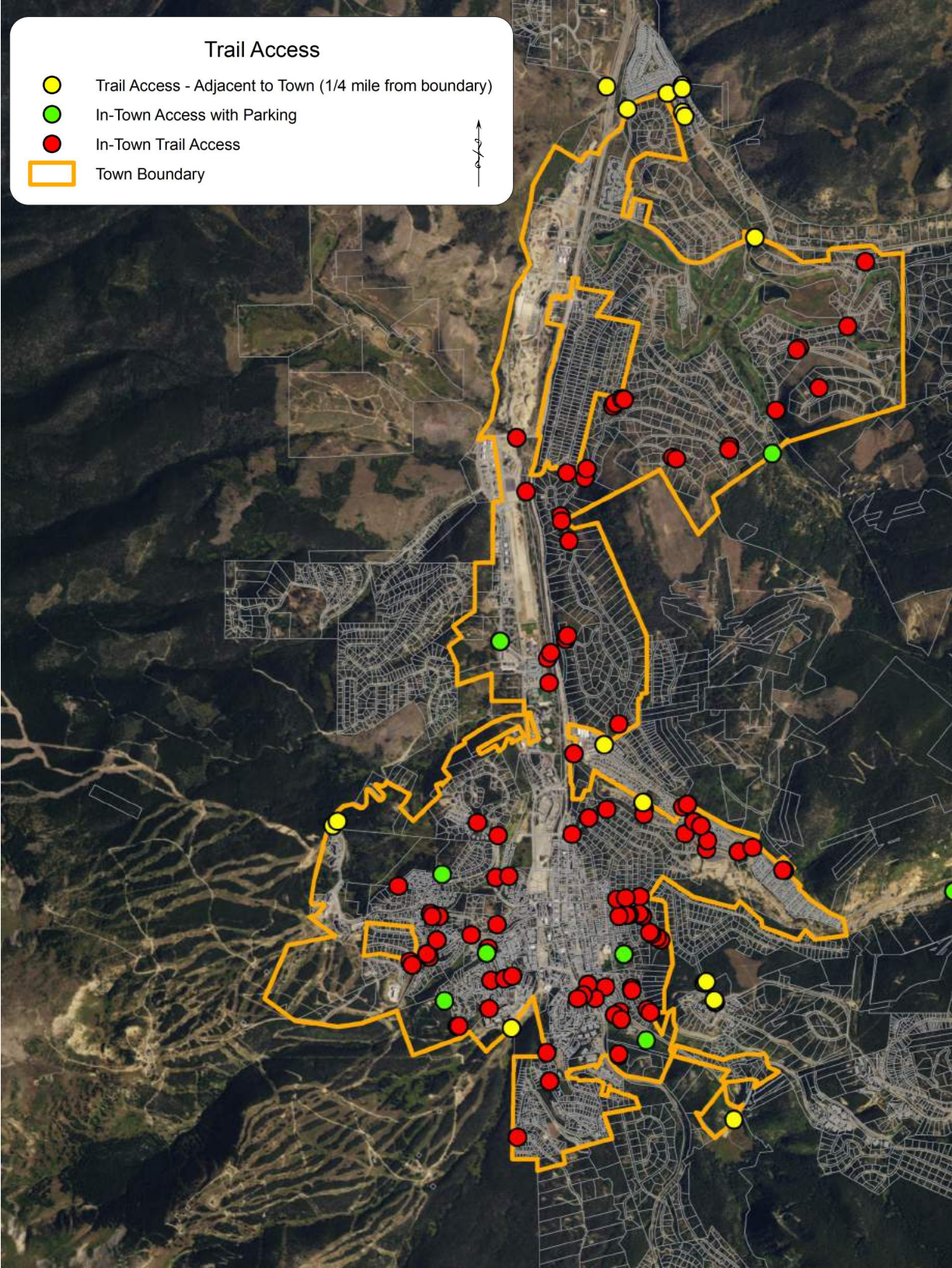
Trail Access

The Open Space program provides **121 trail access portals** located within the Town or within 1/4 mile of its boundary. The numerous portals provide convenient, legal access to Town-maintained trails.



Did You Know?

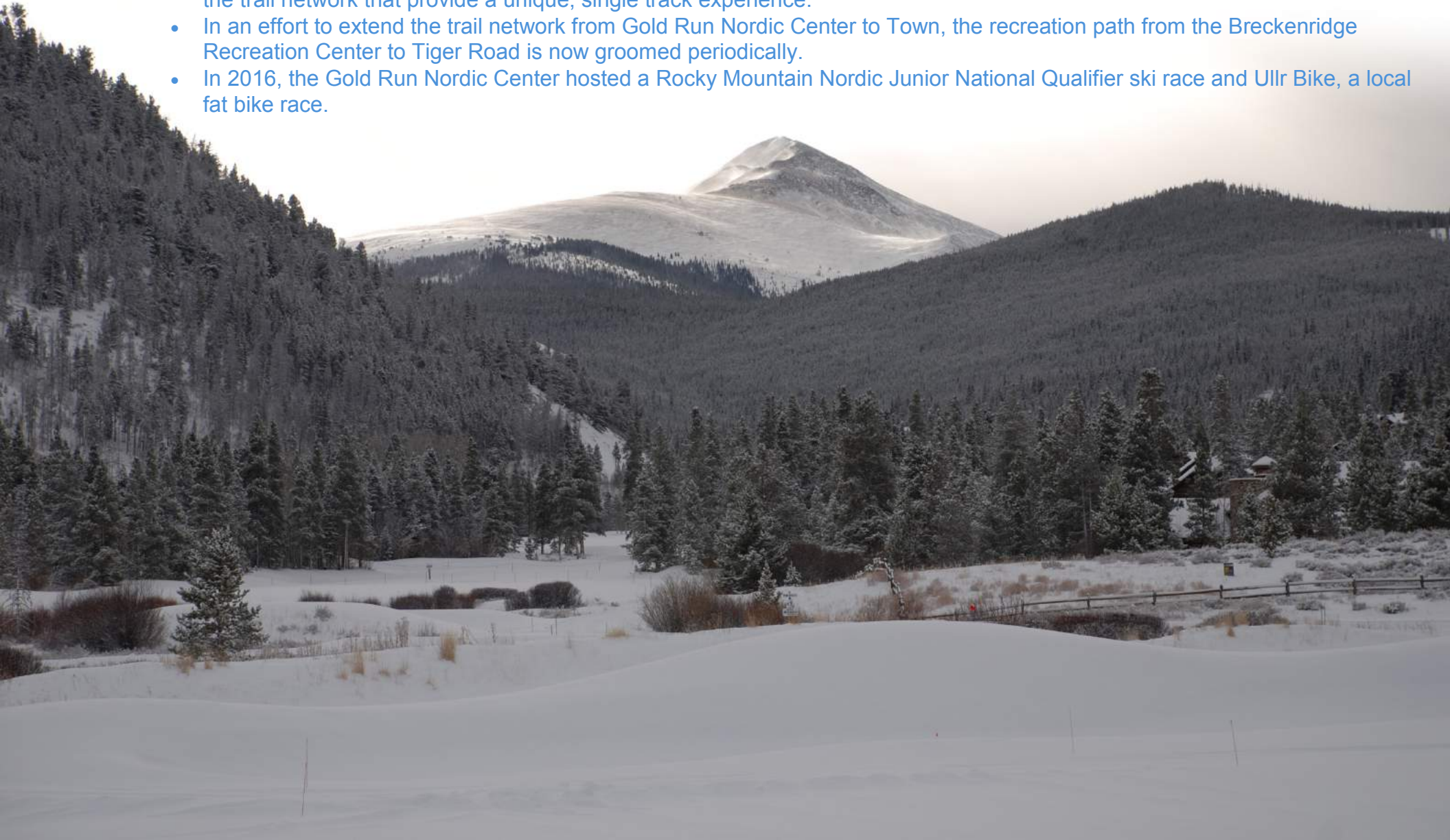
80% of all in-Town properties are within 1/4 mile of a Town-maintained trail access portal.



Gold Run Nordic Center

In 2016, the Open Space program began managing the Gold Run Nordic Center, our premier Nordic facility with over 30K of impeccably groomed classic and skate cross-country ski trails, 13K of snowshoe trails, fat biking, an ice skating pond, sleigh rides, and ski lessons for all abilities.

- The Nordic trail network extends into the Golden Horseshoe and provides numerous opportunities for non-motorized users, from skiers to snowshoers to fat bikers, to experience a winter wonderland.
- With the aid of a new grooming implement towed behind a snowmobile, we added three new snowshoe and fat bike trails to the trail network that provide a unique, single track experience.
- In an effort to extend the trail network from Gold Run Nordic Center to Town, the recreation path from the Breckenridge Recreation Center to Tiger Road is now groomed periodically.
- In 2016, the Gold Run Nordic Center hosted a Rocky Mountain Nordic Junior National Qualifier ski race and Ullr Bike, a local fat bike race.

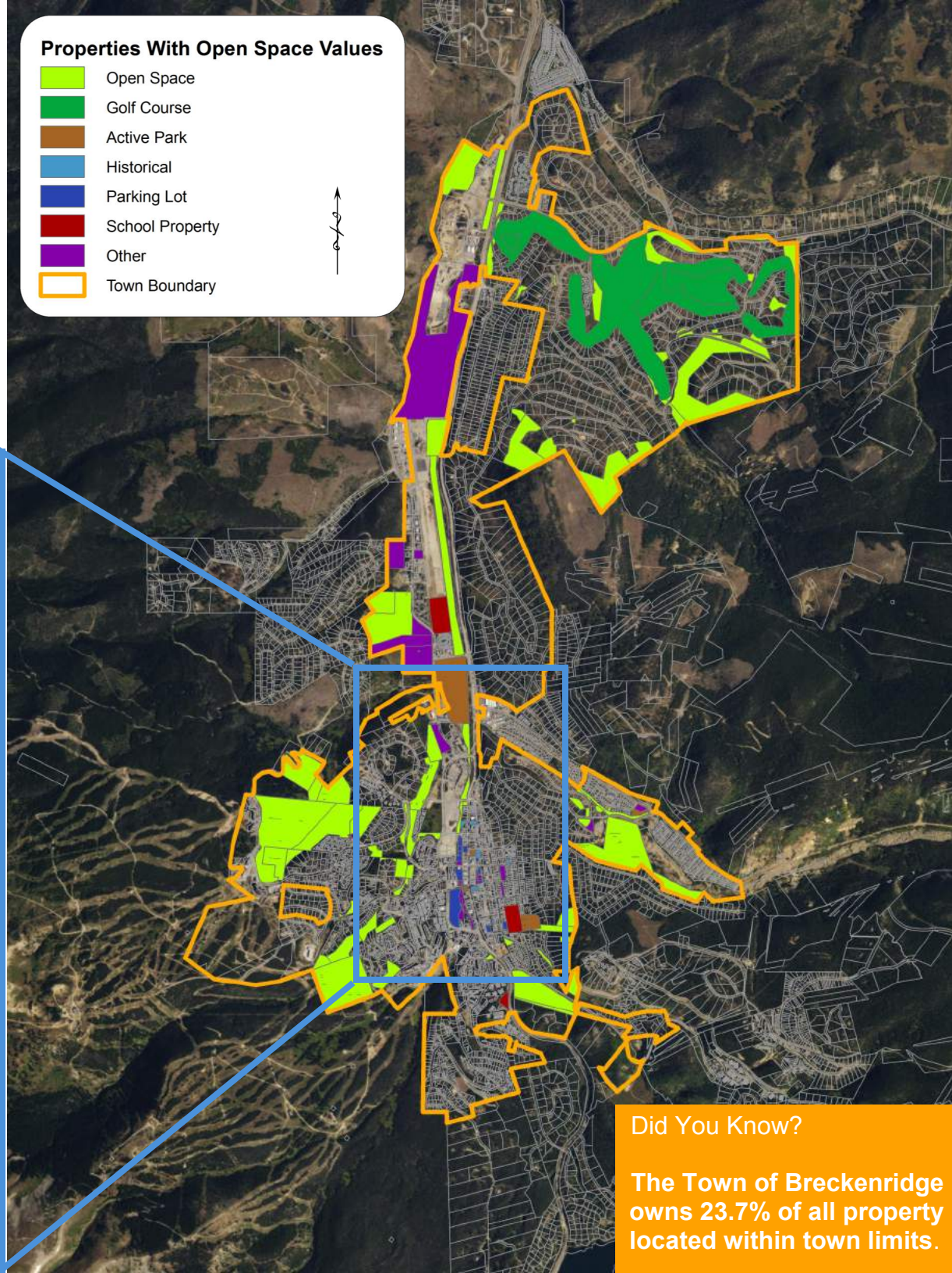
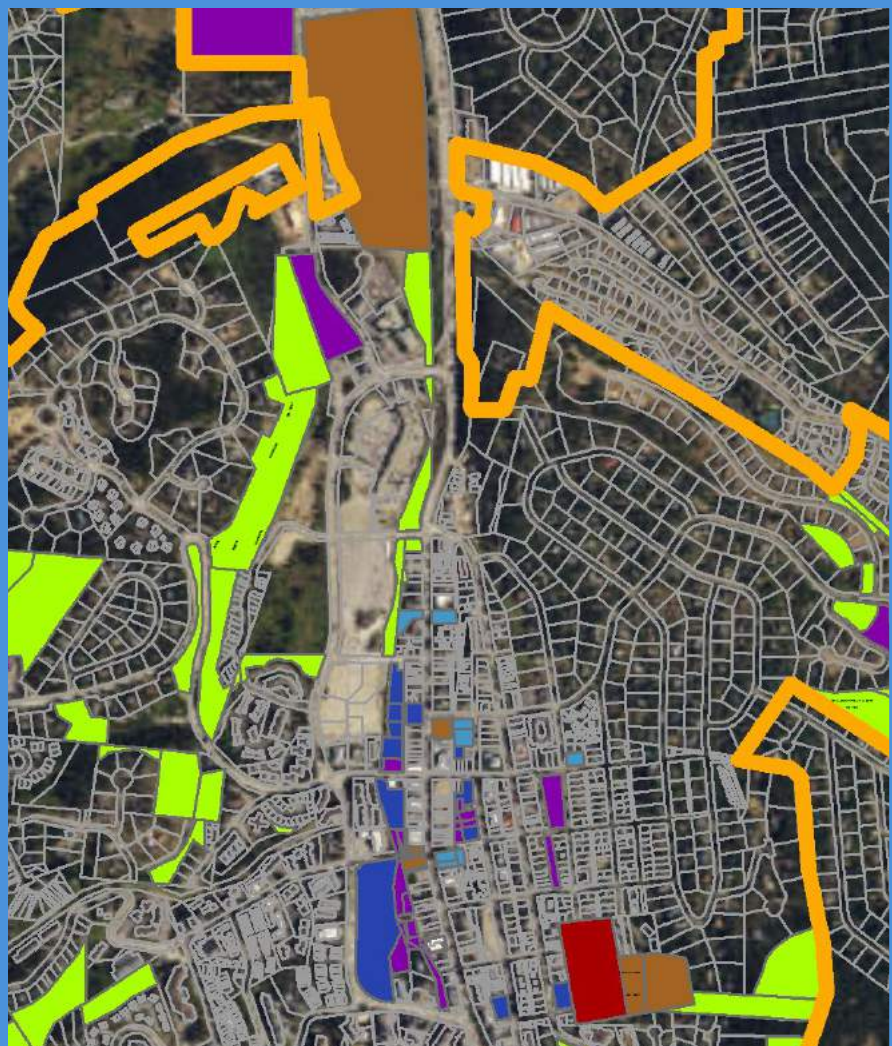



Other In-Town Properties with Open Space Values

Other community properties not managed by the Open Space program offer open space values such as relief from development, active park space, private open space, and visual backdrop. Examples of properties that exhibit these qualities include historical sites, school properties, active parks, and the golf course. Many of the in-Town open space parcels were dedicated through the development permit process.

Properties With Open Space Values

- Open Space
- Golf Course
- Active Park
- Historical
- Parking Lot
- School Property
- Other
- Town Boundary



Did You Know?
The Town of Breckenridge owns 23.7% of all property located within town limits.

2016 Accomplishments

Wellington Bike Park Pump Track Addition



Photo credit: Liam Doran

- New Beginner Pump Track Constructed
- New Informational Sign Installed
- Dero Fixit Station Installed
- Fencing Constructed along Stables

Acquisitions



Photo credit: Liam Doran

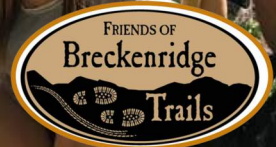
2016 Acquisitions (82 acres)

- Northstar, Eagle's Nest, and Senator Lodes
- Terrible Lode
- Isrealite Lode
- Bacon Lode
- Charlie Ross Lode
- Coyne Valley Placer Lot B
- Egipt Lode
- Valley of the Blue Lot 95 TDR

Volunteers



- 721 Volunteers
- 3,919 Total Hours
- 8,500 Feet New Trail Constructed
- 500 Seedlings Planted
- \$92,331 Value



Partnerships



Trails



New Trails & Realignment (3.8 miles)

- Galena Extension
- Peaks Connect/Mid Mountain Trail
- Wellington Trail
- Barney Ford Clear Cut (Improvements)
- B-Line (Improvements)

Our People

The success of the Open Space program is dependent upon the many people who make our work possible, including the residents and visitors who experience our open spaces and trail network, our conservation partners, volunteers, Town staff, Breckenridge Open Space Advisory Commission (BOSAC), and Town Council.

Thank you for making 2016 a successful year for open space and trails.

Did You Know?

The Open Space program is overseen by the Breckenridge Open Space Advisory Commission (BOSAC) and Town Council. The seven members of BOSAC are residents of Breckenridge and are appointed by Town Council to serve 2-year terms.

2016 BOSAC Members

Jeff Cospolich, *Chair*
Jeff Carlson, *Vice Chair*
Craig Campbell
Gavin Dalgliesh
Elizabeth Miller
Matt Powers
Wendy Wolfe, *Town Council Liaison*

Open Space & Trails Staff

Scott Reid, *Director of Recreation*
Anne Murphy, *Open Space & Trails Manager*
Tony Overlock, *Open Space & Trails Specialist*
Joel Dukes, *Lead Trails Technician*
Andrew Carney, *Trails Technician*
Nathan Guild, *Trails Technician*
Dominic Muth, *Trails Technician*
Keaton Soto-Olson, *Trails Technician*
Ryan Walker, *Trails Technician*

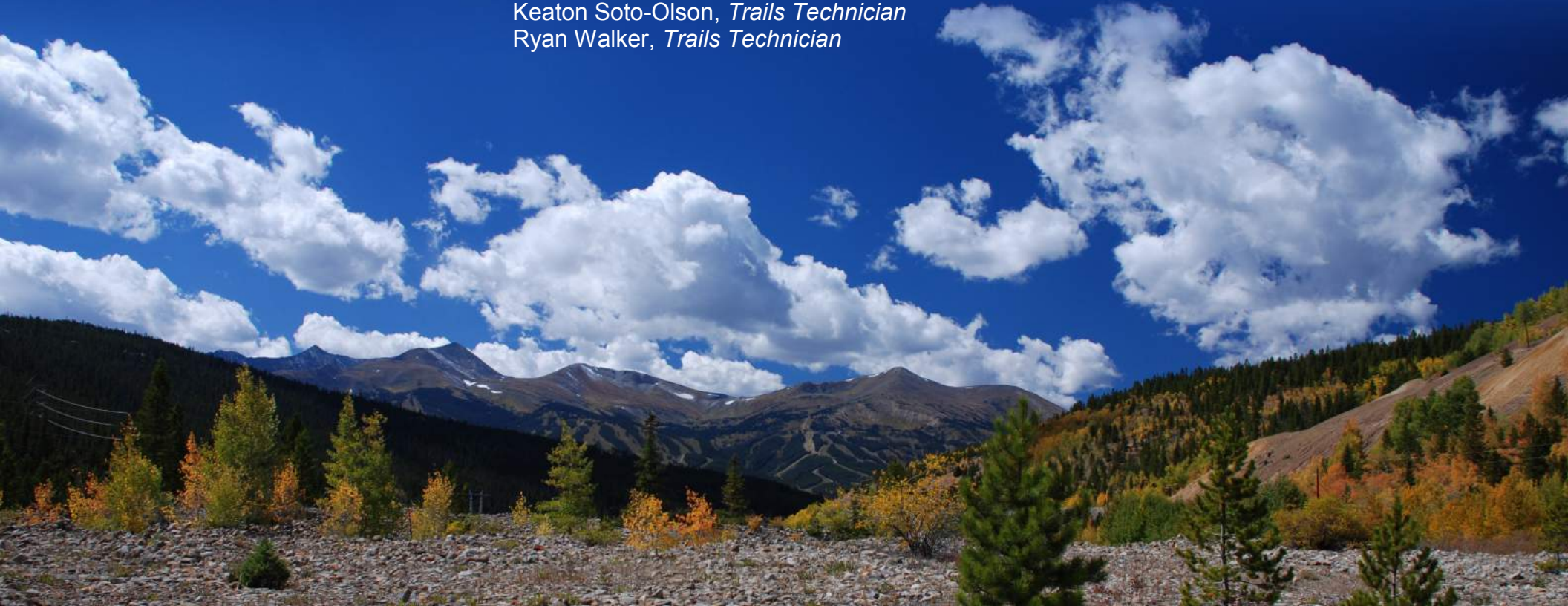




Photo credit: Liam Doran

For more information please visit
www.TownofBreckenridge.com

